



# CINEA

European Climate Infrastructure and Environment  
Executive Agency

**Plan4Res Final Webinar**

**KONTONASIOU Eleni**

**Project Manager**

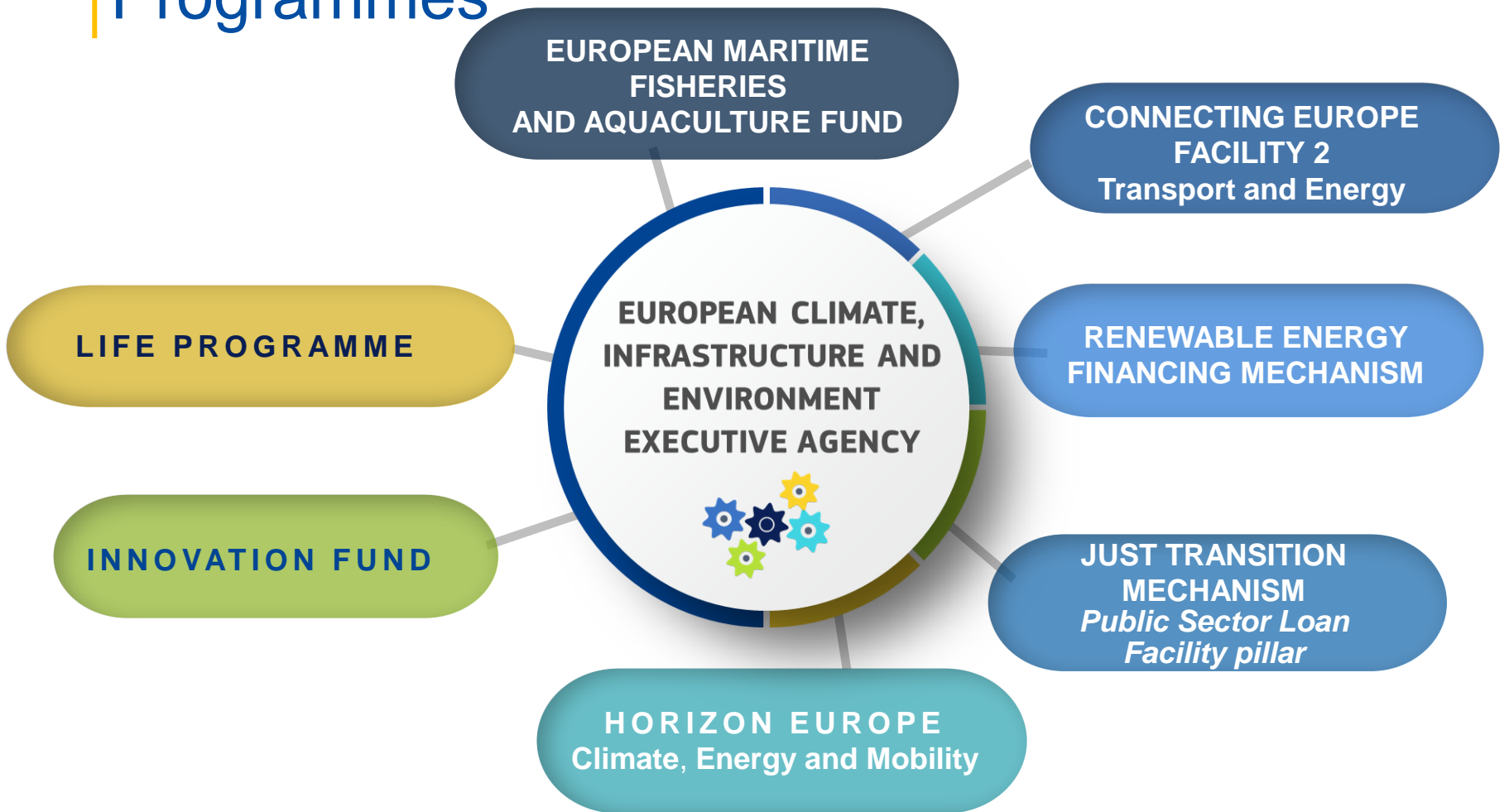
**Dep. C - Unit C.2 Horizon Europe Energy**

# From INEA to CINEA

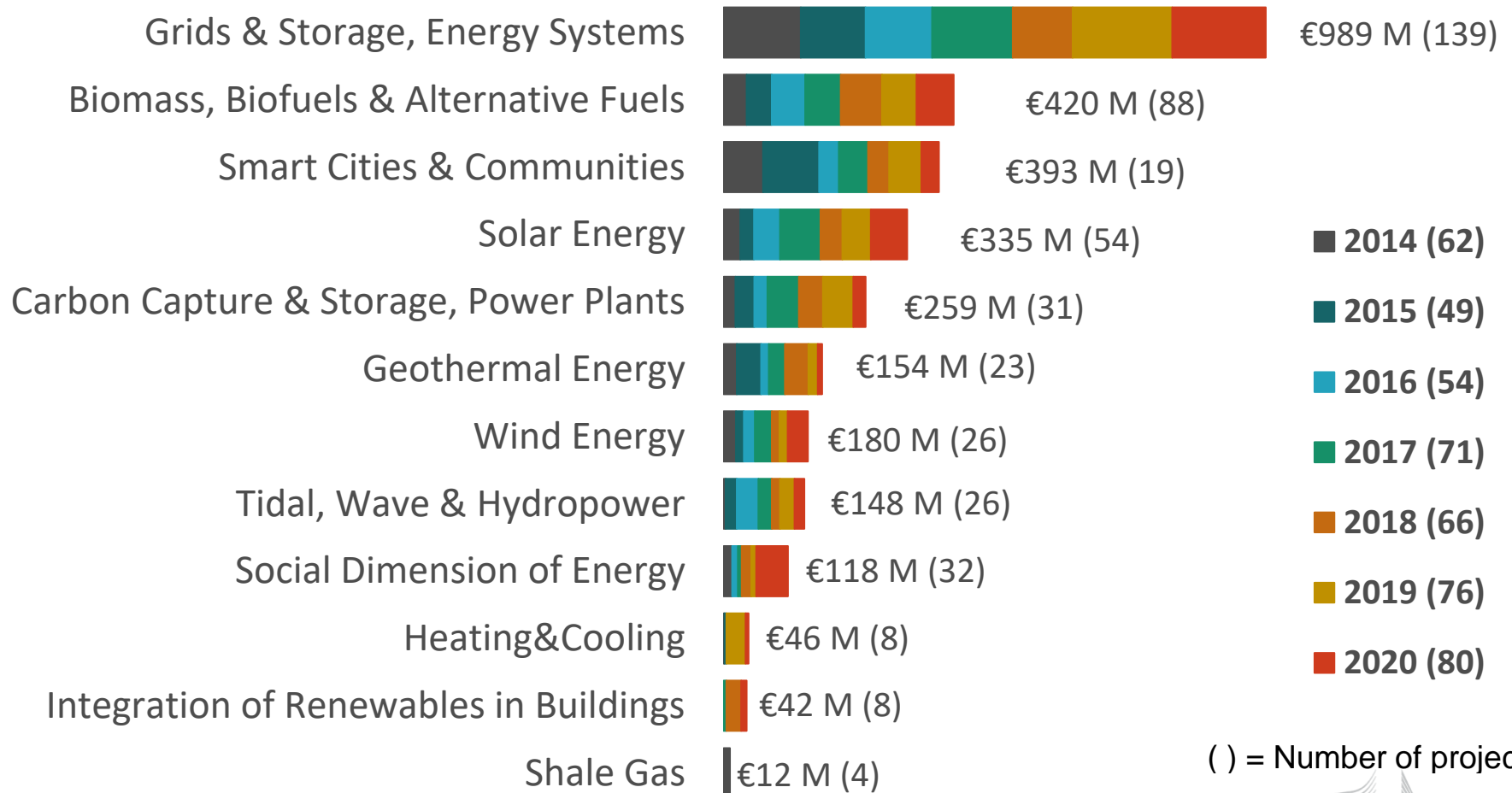


- Since 2014, INEA has grown its CEF and H2020 portfolio
- From April 2021 we became **CINEA** - the **Climate, Infrastructure and Environment Executive Agency**
- Adding new 2021-2027 programmes in other areas such as climate, environment, maritime

# The Programmes



# Former INEA-managed H2020 Energy Projects (458 projects, €3.1 billion)



( ) = Number of projects

# H2020 Energy Modelling projects managed by CINEA



LCE-21-2015

**LCE-21-2015 - Modelling and analysing the energy system, its transformation and impacts (DG RTD)**

MEDEAS  
SET-NAV  
REFLEX  
REEEM

**Total EU contribution  
44.8 M€**

LCE-05-2017

**Tools and technologies for coordination and integration of the European energy system (DG ENER)**

Plan4Res  
SPINE  
PLANET  
MAGNITUDE

LC-SC3-CC-2-2018

**Modelling in support to the transition to a Low-Carbon Energy System in Europe (DG RTD)**

OPEN ENTRANCE  
SENTINEL

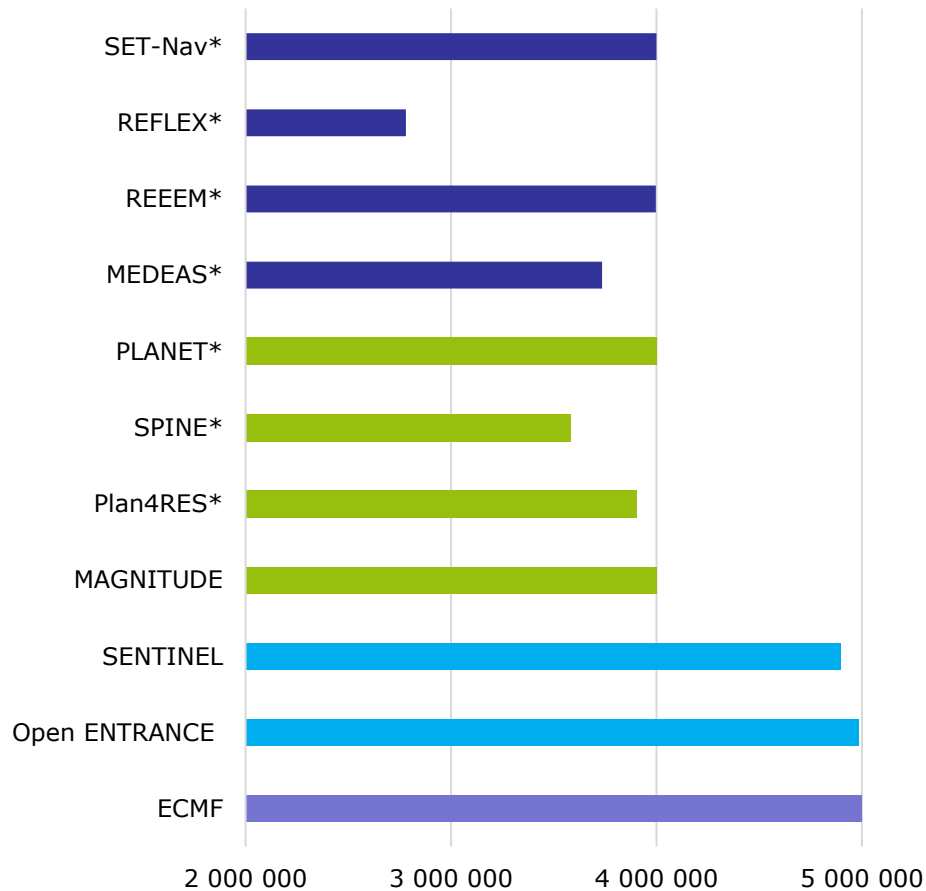
LC-SC3-CC-7-2020

**European Energy and Climate Modelling Forum (2020-2024) (DG RTD)**

ECEMF

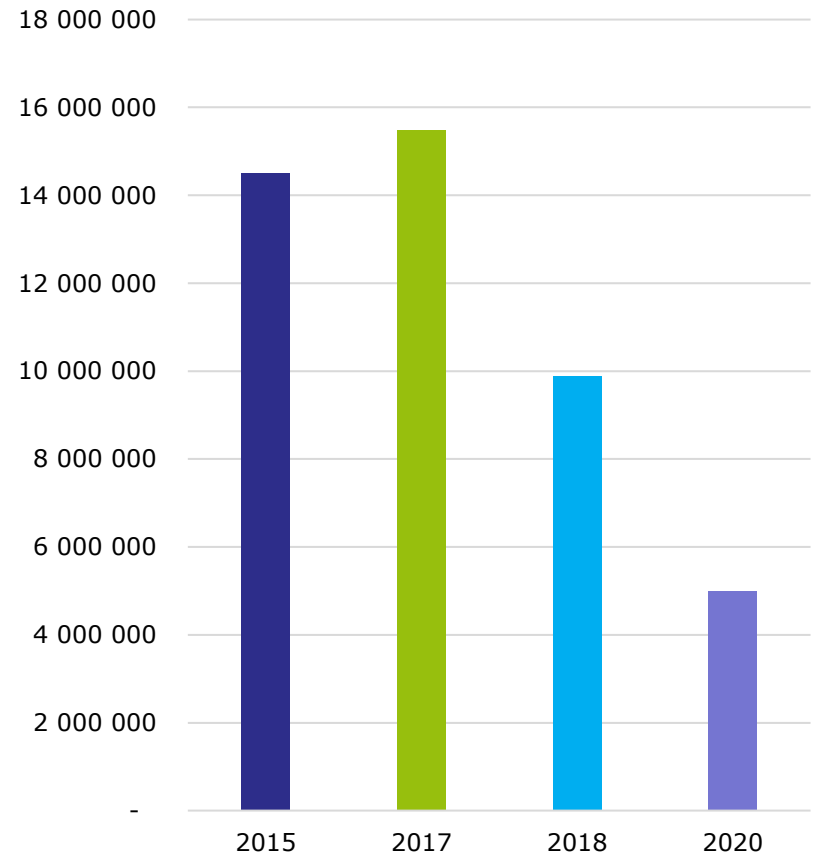
# H2020 Energy Modelling projects managed by CINEA

## EU contribution per project



\*closed project

## EU Contribution per Call





## Topic

- LCE-05-2017 - Tools and technologies for coordination and integration of the European energy system

## Duration

- 42 months

## Budget

- €3.9M

## Consortium

- 7 partners

## Main aim

- to develop end-to-end planning tool to successfully increase the share of renewable energy into the European Energy system without compromising on system reliability

## Tools developed

- An end-to-end planning and operation tool
- An IT platform for providing seamless access to data and high-performance computing resources
- Efficient solving algorithms
- A database of public data used for modelling
- 3 Case studies showing the tool's functionalities and relevance



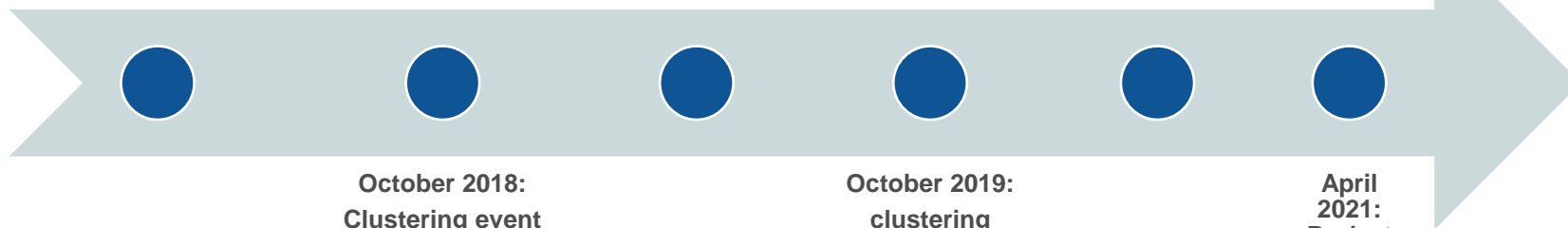
Sponsors for EMP-E Conference 2019



November 2017:  
Project start

October 2019:  
EMP-E 2019

October 2020:  
EMP-E 2020



October 2018:  
Clustering event  
(INEA)

October 2019:  
clustering  
event (INEA)

April  
2021:  
Project  
end



Key H2020 project contributors to the EMP-E 2020





# Keep in touch - CINEA



[cinea.ec.europa.eu/](http://cinea.ec.europa.eu/)



[@CINEA\\_EU](https://twitter.com/CINEA_EU)  
[@cleanenergy\\_eu](https://twitter.com/cleanenergy_eu)



[European Climate, Infrastructure and Environment  
Executive Agency](#)



[CINEATube](#)

*Thank you!*